

Chinese Railway Loading Photo Requirements Guide

Introduction:

This guide is a photo guide provided according to the requirements of the China Railway Bureau.

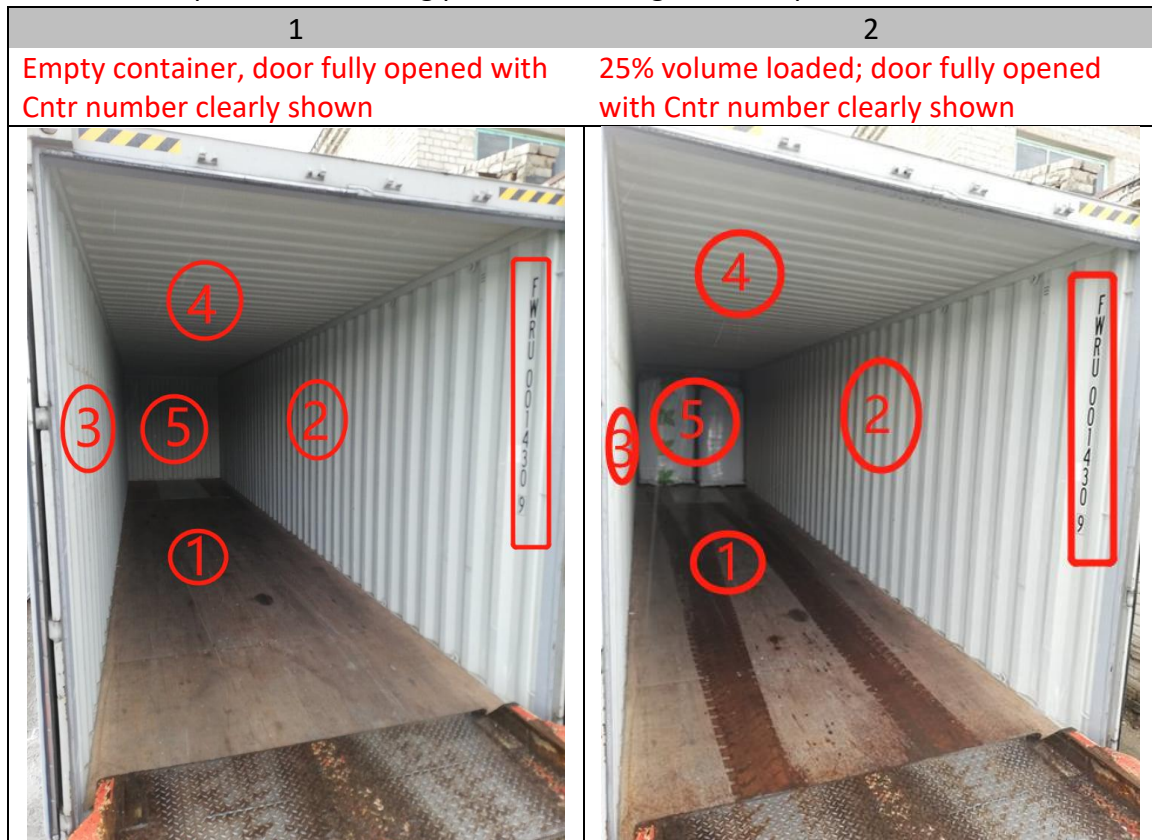
There are three parts in total: The first part is to guide the packing to take pictures; the second part is about the requirements of strengthening photos; and the third part is to demonstrate the error of taking pictures.

Note: Please take as many photos as possible to avoid the unqualified situation.

If possible, please print the first three pages to the cameraman.

Requirement:

- Please provide 10 loading photos according to the requests below:



3 Half volume loaded; door fully opened with Cntr number clearly shown

4 75% volume loaded; door fully opened with Cntr number clearly shown



5 Full loaded; door fully opened with reinforcement measure showed

6 Full loaded; door fully opened with reinforcement measure and Cntr number



7

Right door closed with Cntr number on other door is clearly shown



8

Two doors closed with seal on it and Cntr number clearly shown.



seal on the first doorpost lock of right door

9

Container Nameplate (CSC safety approval)



10

Seal numbers could be read



Please take at least 5-10 photos displaying the reinforcement measure of the cargo

For the cars that you ship, at least every car needs to have some detailed photos of **how the tires are fastened, how the car body is fastened**



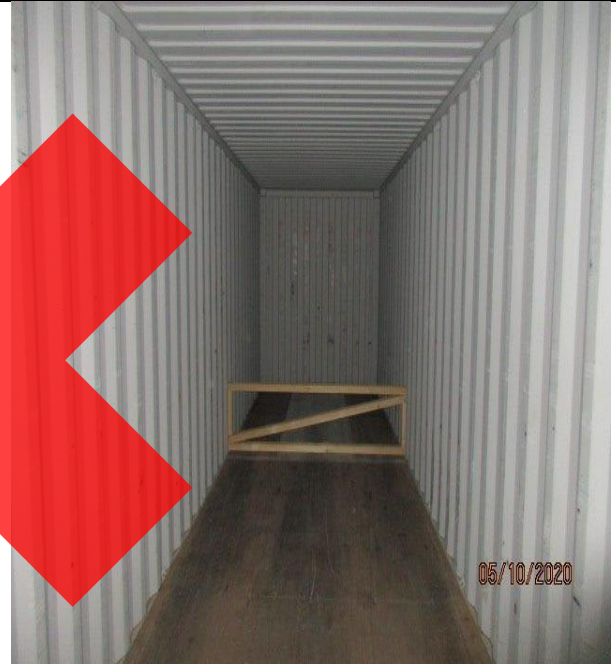
Qualified

Wrong Example

① Unqualified photos for "empty with door open"



Unqualified reason: didn't show full door frame, photo must show container inside overall status



Unqualified reason: can't see container number and overall status of container; can't see overall floor status; empty should without loading anything, no tool, no people inside, etc.

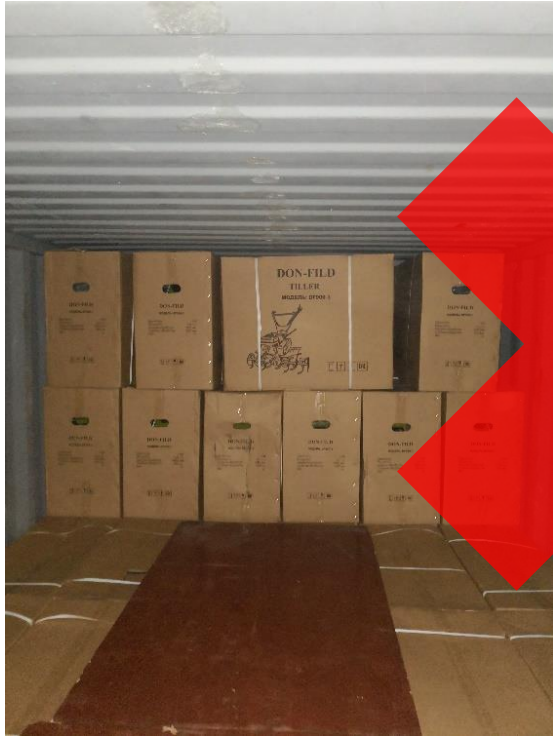


Unqualified reason: can't see container number, can't see inside status and floor



Unqualified reason: can't see container number, can't see floor status, too dark to see full status inside the container

② Unqualified photos for "1/4(25%), 1/2(50%), 3/4(75%)loading"



Unqualified reason: can't see full status of container inside



Unqualified reason: can't see container number and overall status of the container



Unqualified reason: can't see the overall status of the container



Unqualified reason: can't see container number and overall status of container

③ Unqualified photos for "full (100%) loading "



Unqualified reason: can't see the overall status of the container



Unqualified reason: can't see container number clearly, need high-resolution photos.

④ Unqualified photos for "photo with right door closed "



Unqualified reason: right door not closed properly.



Unqualified reason: should close the right door, not the left door.

⑤ Unqualified photos for "photo with door close after sealed "



Unqualified reason: can't see the container number and seal status due to the light being too dim.



Unqualified reason: can't see container number and seal status due to long distance.



Unqualified reason: didn't show the whole frame of the container.



Unqualified reason: no seal on it